

CC-20 SERIES COMPARISON



CC-26



CC-28



	ENGINE CARBON CLEANING	✓	✓
	DPF CLEANING	✓	✓
	APPLICATION		
	INPUT POWER	220 V / 16A 1PH	220 V / 32A 1PH
	POWER GENERATION	4 KW/H	6.6 KW/H
	WEIGHT	115 KG	175 KG
	DISPLACEMENT	Variable Gas Flow	Variable Gas Flow
	ENGINE RANGE SELECTION	1.0 - 1.9 2.0 - 2.9 3.0 - 3.9 4.0 +	Same as CC-26 plus 4.0 - 8.0 8.0 - 12.0 12.0 - 16.0 16.0 +
	TANK SIZE	24L	48L
	RATIO OF ELECTROLYTE TO WATER TO BE USED*	1:10 - 2:10 Electrolyte Soln	1:10 - 2:10 Electrolyte Soln
	CELLS	9 x 9 RAID Technology (Generators)	18 x 18 RAID Technology (Generators)
	CELL TYPE	Wet cell	Wet cell
	FLEXISCOPE / OPTIONAL EXTRA <small>*Not essential but recommended.</small>	✓	✓
	TOUCHSCREEN	✓	✓
	CARBON CLOUD CONNECT / OPTIONAL EXTRA <small>*Not essential but recommended.</small>	✓	✓

ENGINE CARBON CLEAN 20 SERIES WITH DPF SMART CLEAN FEATURE

"BEST IN CLASS CARBON CLEANING SOLUTIONS IN THE WORLD"



Carbon Clean Ltd.
181 Forest Rd
Hainault
Essex, IG6 3HZ, UK



+44 (0)203 507 0175
Info@carbon-clean.co.uk
www.carbon-clean.co.uk



AUTOMOTIVE ENVIRONMENTAL TECHNOLOGY
www.carbon-clean.co.uk

About Us

Carbon Clean began with a simple ethos of utilizing the best applications of new and existing technology to provide innovative carbon removal equipment to the automotive industry.

Employing an in-depth and wide ranging research methodology to find the best in class machines that will prove both labour saving and profitable for our customers. Our passion is to maintain an 'ecological focus' on the environmental impact of the systems and agents our machines employ.

Our state of the art machines are designed for easy use by any workshop. Made to last, with high quality components and little maintenance required they are also a great long term investment.



“We're passionate about providing easy to use solutions to help the workshop, vehicle owner and of course the environment.”

DPF Smart Clean

Our CC-20 series machines are the first of their kind equipped with DPF Smart Clean technology. A solution is passed into the engine air intake as an atomised gas. The solution passes through the engine system into the DPF where it targets soot and ash build up. The soot and ash gets broken down and expelled through the exhaust reducing blockages and restoring the filter.



Breakthrough Technology

The CC-20 series boasts all our regular safety and control devices with shutdown protection for walk away servicing and gas control tailored to specific engines. Beyond this our latest equipment offers some significant new built in features to assist with service management and visual inspection.

Carbon Cloud Connect *Optional Extra

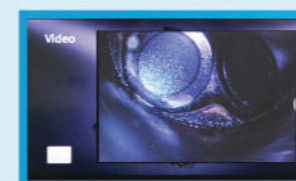
Using GSM/Wifi technology the CC-Duo equipment can be connected online to provide:

- ✓ Location tracking
- ✓ Service usage tracking
- ✓ Remote safety shutdown control against theft and misuse



HD Touchscreen & In-Built Flexiscope *Optional Extra

The Flexible borescope (Flexiscope) is for inspecting the internal engine bay pre and post clean. The Flexiscope is equipped with it's own lighting system and sends a high definition live feed which can be monitored on the front of the unit. The monitor doubles as an intuitive touchscreen display providing a simple way to navigate through the equipment settings.



Flexiscope Live Feed
*Optional Extra



Revolutionary Dual-Purpose Carbon Removal Technology.

Our brand-new CC-20 series machines - Powerful combined cleaning for the ENGINE and the DPF.

Our CC-20s combine state of the art carbon removal technologies with oxyhydrogen for the engine and DPF Smart Clean for the DPF. Both these techniques are off-ramp and take just a matter of minutes to complete. This allows a single engineer to easily and safely perform these vital services all from a single unit.

Main Benefits of Carbon Removal

Fuel Economy

Experience up to 5-10% increase in a vehicle's MPG after using our carbon removal technology.



Performance

Over the years a vehicle will lose its performance in the main combustion chamber as well as power-train components like DPFs, EGR valves + turbos. Our machines restore the performance of your customers' engines.



Smoother Engine

Clearing carbon reduces friction amongst components and helps your engine run smoother with less vibration and sound.



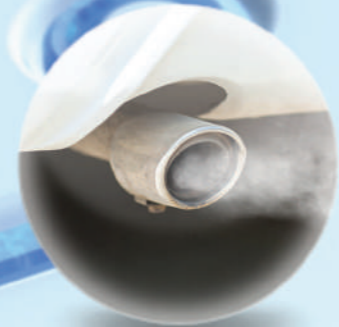
Preservation

Our technology increases the longevity of engine components by reducing the damage caused by carbon build up. Prevention is always better than cure.



Lower Harmful Emissions

Our machines directly help the environment by reducing toxic carbon emissions from polluting the atmosphere. We understand this is a global concern and are proud to be helping improve air quality all over the world.



Employing Carbon Clean technology as part of your service options is both great for your customers' vehicles and a boost for workshop revenue. With all operations being off-ramp and with features like walk away testing as standard; our machines take up little valuable workshop space and minimal operator time.

A carbon clean is recommended as part of any vehicles' regular service routine and can be used to improve or fix a long list of engine issues.

As the trend for carbon cleaning continues to grow we see the profitability of our machines going from strength to strength.


The perfect investment for the progressive workshop

Aftercare & Support

All our machines come with in-depth literature and online video tutorials to take you through set up, operation and best practice to ensure you get top results from each clean you perform.

We also have a number of business support options tailored to help your carbon cleaning service thrive. This includes marketing support, online resources and inclusion to our national network of centres and engineers. To find out more call one of our dedicated team, visit our website or check our social media.




 Watch video demonstrations on our website or our Youtube channel



CC 26

Product Specification

Description	Oxyhydrogen Engine & DPF Reconditioning
Model No	CC-26
Input Power	220V / 16A / 1PH
Output Power	4kW MAXIMUM
Display Mode	Touch Screen, Multi-User Interface
Net Weight	115kg
Dimensions	570(W) x 900(L) x 1140(H)(MM)
Cells	Wet Cell/9X9 RAID Technology
Vehicle Type	




Product Features



CC 28

Product Specification

Description	Oxyhydrogen Engine & DPF Reconditioning
Model No	CC-28
Input Power	220V / 32A / 1PH
Output Power	Max 6.6kW
Display Mode	Touch Screen, Multi-User Interface/
Net Weight	175kg
Dimensions	570(W) x 1010(L) x 1140(H)(MM)
Cells	Wet Cell/18X18 RAID Technology
Vehicle Type	



Our CC-20 series machines are the latest addition to our Carbon Clean range. We have implemented groundbreaking additional features and refinements to develop the ultimate in Carbon Cleaning machinery.

The CC-26 is ideal for the passenger market to clean vehicle engines from 1 – 4ltrs, the CC-28 covers the commercial workshop and all engines from 4 – 16+ ltrs. We have increased the power to the electrolytic tanks for increased oxyhydrogen production with 4Kw of power output for the CC-26 and 6.6Kw for the CC-28 running 9 and 18 wet cells respectively. The cells are monitored with our patent RAID technology so, should a cell fail, gas production will be unaffected at up to 1800ltrs/hr. With this level of gas production our machines can clean a 4ltr engine in just half an hour.

The machines also include DPF Smart Clean technology to specifically target and clean the DPF at the same time as the engine is cleaned. DPF Smart Clean sends atomised solution to the DPF through the vehicle's air intake as the engine runs. The solution breaks up soot and ash in the filter which is then expelled through the exhaust. The 20 Series machines offer a complete carbon removal method packaged in a single, portable unit.

Other new additions include the Flexiscope; a flexible borescope for high resolution visual inspection of the engine interior. This can be viewed directly through the touch screen display on the control panel. The touch screen also provides straight forward navigation of the equipment settings and variable gas flow.

*OEM custom options are available.